

For Lease

7702 - 7818 Donegan Drive

Manassas, Virginia



Grant Building A

Features:

- ◆ Close proximity to I-66, Routes 29 and 28, and 234
- ◆ Campus-style business park within walking distance to banks, restaurants and shopping
- ◆ Across from the Bull Run Shopping Center
- ◆ Signage available for select suites
- ◆ Free surface parking at a ratio of 3.6 spaces per 1,000 SF leased
- ◆ Rental rate: \$18.50 PSF, full service
- ◆ Under new ownership and management

Space Availability:

- ◆ Suite 7730: 2,094 SF
- ◆ Suite 7732: 1,322 SF
Available 2/1/2014
- ◆ Suite 7762: 3,052 SF
- ◆ Suite 7794: 3,122 SF
- ◆ Suite 7800: 1,795 SF

Larry FitzGerald Executive Managing Director **703.918.0221** lfitzgerald@ngkf.com

Ed Bretz Associate Director **703.918.0256** ebretz@ngkf.com

**Newmark Grubb
Knight Frank**

1420 Spring Hill Road, Suite 300, McLean, VA 22102

www.sudleynorth.com

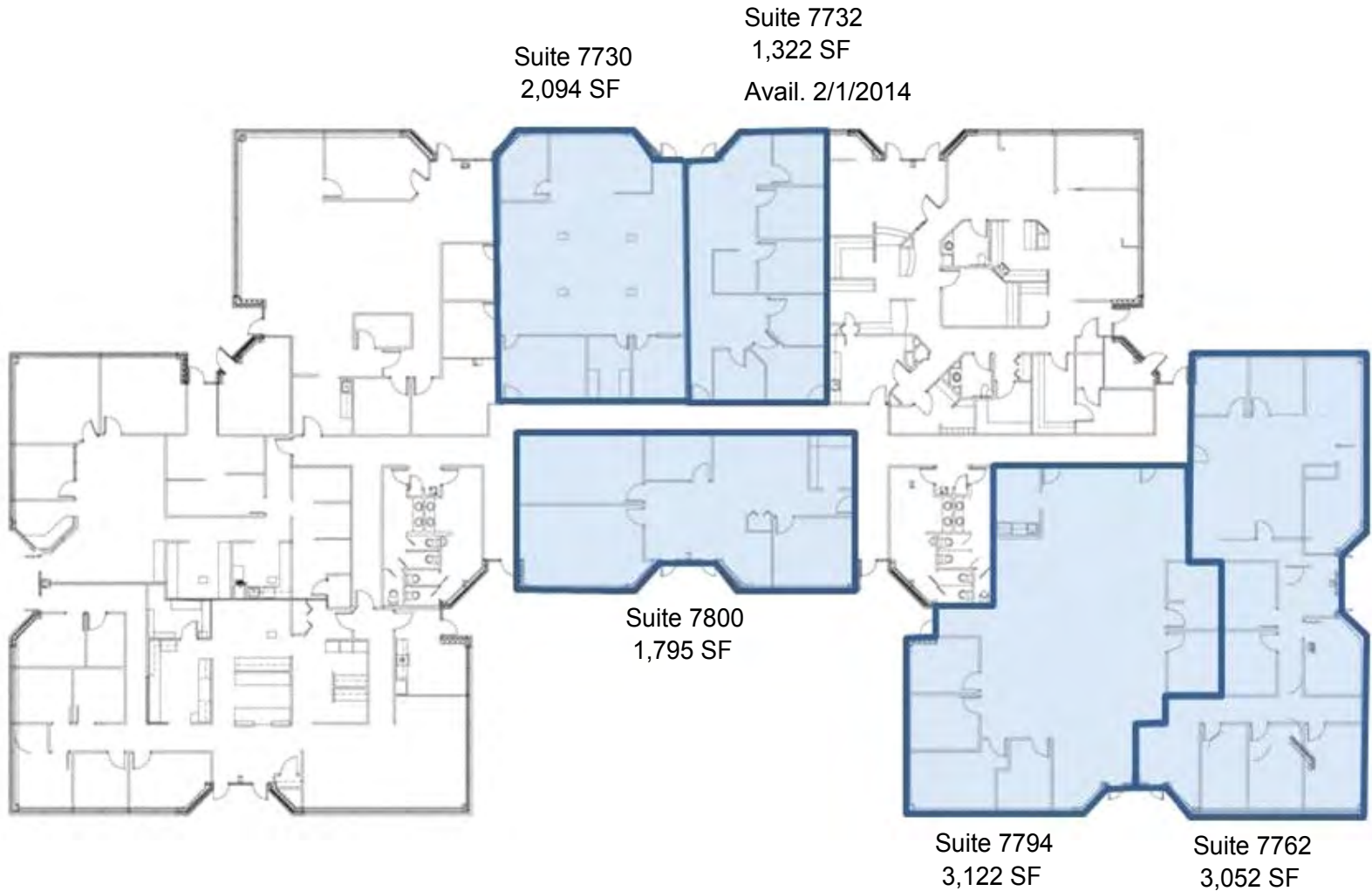
Procuring broker shall only be entitled to a commission calculated in accordance with the rates approved by our principal only if such procuring broker executes a brokerage agreement acceptable to us and our principal and the conditions as set forth in the brokerage agreement are fully and unconditionally satisfied. Although all information furnished regarding property for sale, rental, or financing is from sources deemed reliable, such information has not been verified and no express representation is made nor is any to be implied as to the accuracy thereof and it is submitted subject to errors, omissions, change of price, rental or other conditions, prior sale, lease or financing, or withdrawal without notice and to any special conditions imposed by our principal.

7702 - 7818 Donegan Drive

Manassas, Virginia



Building A: First (1st) Floor



Larry FitzGerald Executive Managing Director **703.918.0221** lfitzgerald@ngkf.com

Ed Bretz Associate Director **703.918.0256** ebretz@ngkf.com

**Newmark Grubb
Knight Frank**

1420 Spring Hill Road, Suite 300, McLean, VA 22102

For Lease

7864 - 7998 Donegan Drive

Manassas, Virginia



Lee Building (B)

Features:

- ◆ Close proximity to I-66, Routes 29 and 28, and 234
- ◆ Campus-style business park within walking distance to banks, restaurants and shopping
- ◆ Across from the Bull Run Shopping Center Signage available for select suites
- ◆ Free surface parking at a ratio of 3.6 spaces per 1,000 SF leased
- ◆ Rental rate: \$18.50 PSF, full service
- ◆ Under new ownership and management

Space

Availability:

- | | | |
|-----------------------|------------------------|------------------------|
| ● Suite 200: 3,098 SF | ● Suite 250: 1,036 SF | ● Suite 7930: 1,956 SF |
| ● Suite 217: 3,995 SF | ● Suite 7872: 2,266 SF | ● Suite 7946: 7,596 SF |
| ● Suite 219: 3,269 SF | ● Suite 7880: 1,575 SF | ● Suite 7986: 1,562 SF |
| ● Suite 228: 3,004 SF | ● Suite 7896: 3,320 SF | ● Suite 7998: 3,112 SF |
| ● Suite 229: 2,313 SF | ● Suite 7928: 3,438 SF | |

Larry FitzGerald Executive Managing Director **703.918.0221** lfitzgerald@ngkf.com

Ed Bretz Associate Director **703.918.0256** ebretz@ngkf.com

www.sudleynorth.com

Newmark Grubb
Knight Frank

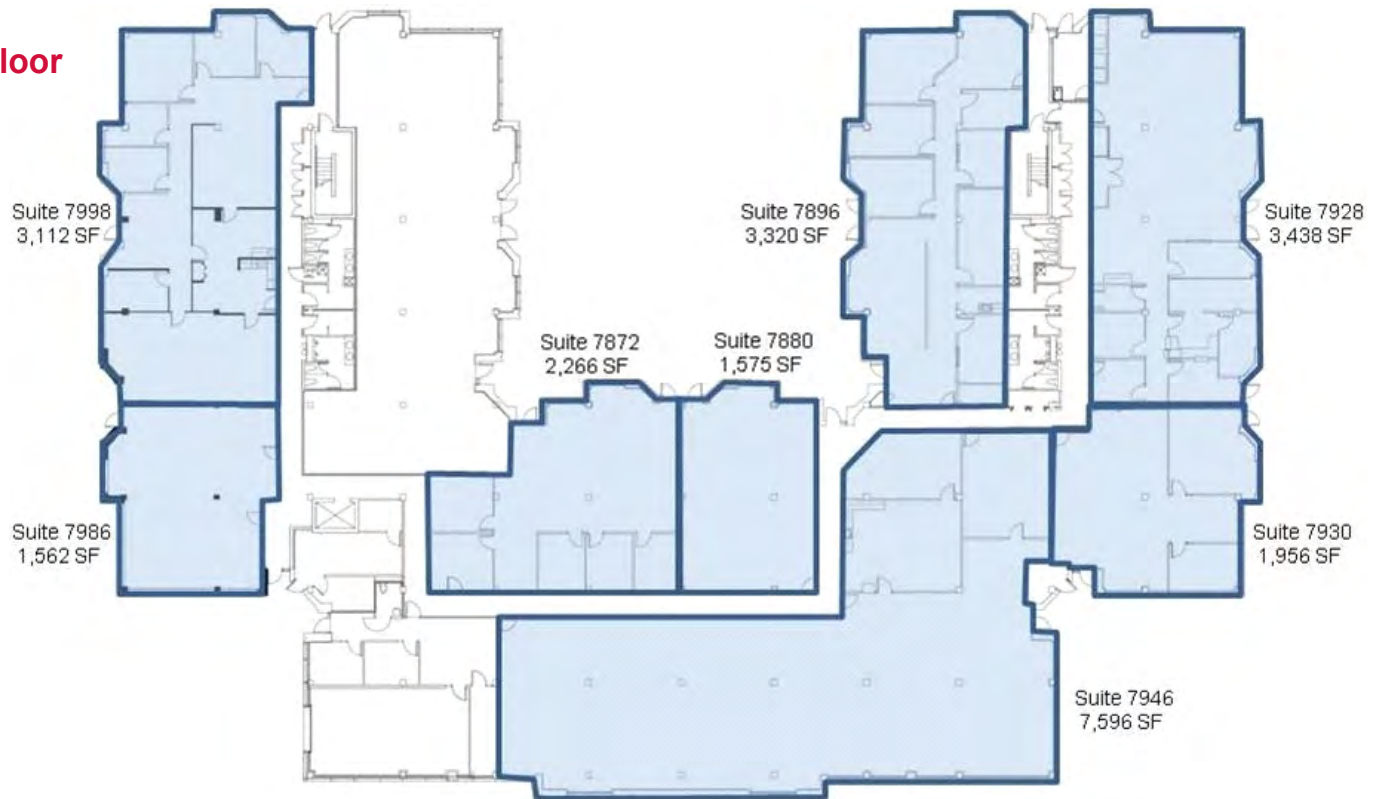
1420 Spring Hill Road, Suite 300, McLean, VA 22102

7864 - 7998 Donegan Drive

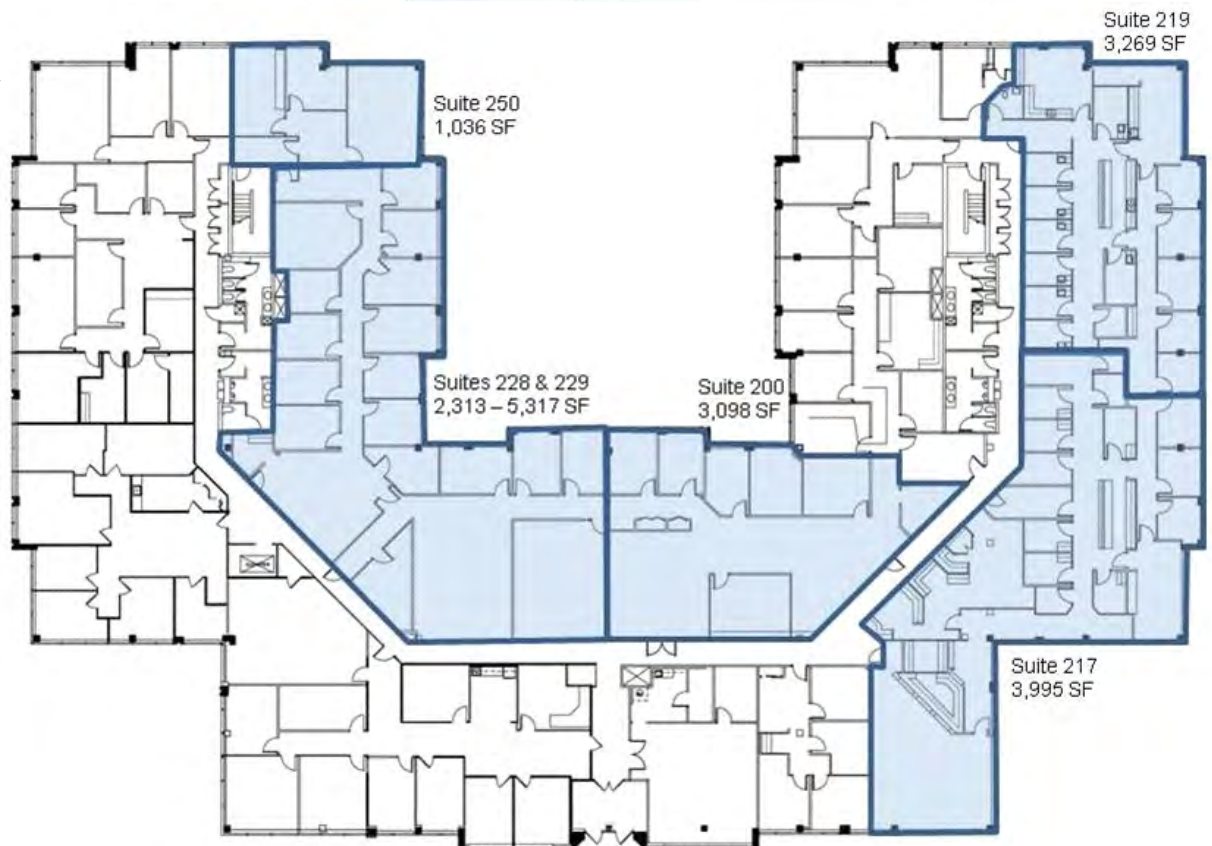
Manassas, Virginia



Building B: First (1st) Floor



Building B: Second (2nd) Floor



**Newmark Grubb
Knight Frank**

Larry FitzGerald Executive Managing Director **703.918.0221** lfitzgerald@ngkf.com

Ed Bretz Associate Director **703.918.0256** ebretz@ngkf.com

1420 Spring Hill Road, Suite 300, McLean, VA 22102

For Lease

7723 - 7845 Ashton Avenue

Manassas, Virginia



Jackson Building C

Property Snapshot:

- ◆ Close proximity to I-66, Routes 29 and 28, and 234
- ◆ Free surface parking at a ratio of 3.6 spaces per 1,000 SF leased
- ◆ Campus-style business park within walking distance to banks, restaurants and shopping
- ◆ Rental rate: \$18.50 PSF, full service
- ◆ Across from the Bull Run Shopping Center
- ◆ Under new ownership and management
- ◆ Signage available for select suites

Space Availability: Suite 7845C: 3,475 SF

Larry FitzGerald Executive Managing Director **703.918.0221** lfitzgerald@ngkf.com

Ed Bretz Associate Director **703.918.0256** ebretz@ngkf.com

**Newmark Grubb
Knight Frank**

1420 Spring Hill Road, Suite 300, McLean, VA 22102

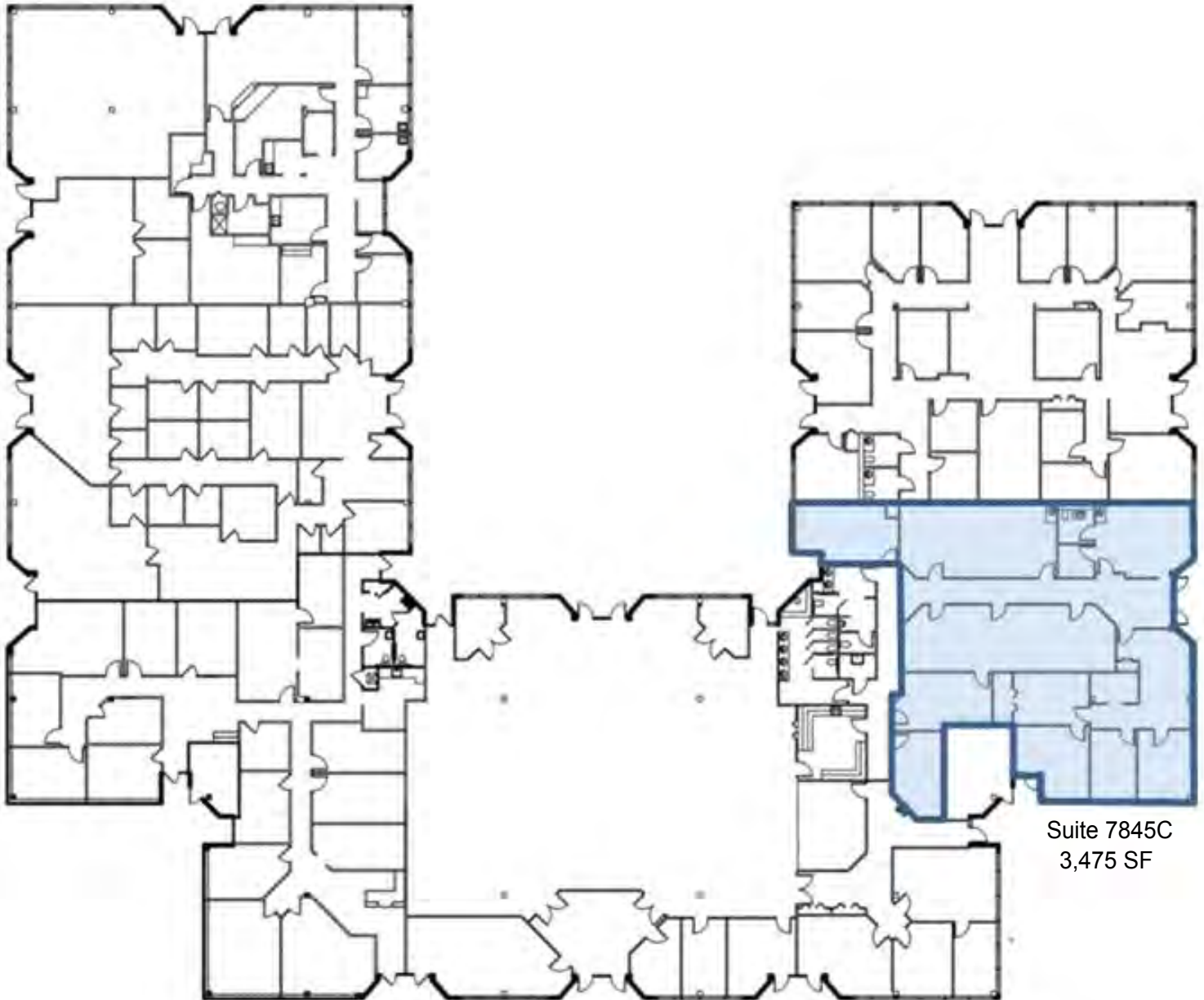
www.sudleynorth.com

7723 - 7845 Ashton Avenue

Manassas, Virginia



Building C



Suite 7845C
3,475 SF

Larry FitzGerald Executive Managing Director **703.918.0221** lfitzgerald@ngkf.com

Ed Bretz Associate Director **703.918.0256** ebretz@ngkf.com

**Newmark Grubb
Knight Frank**

1420 Spring Hill Road, Suite 300, McLean, VA 22102